

Altova GDPR Compliance Database

Installation Guide / Standard Installation

Altova GDPR Compliance Database Installation Guide / Standard Installation

All rights reserved. No parts of this work may be reproduced in any form or by any means - graphic, electronic, or mechanical, including photocopying, recording, taping, or information storage and retrieval systems - without the written permission of the publisher.

Products that are referred to in this document may be either trademarks and/or registered trademarks of the respective owners. The publisher and the author make no claim to these trademarks.

While every precaution has been taken in the preparation of this document, the publisher and the author assume no responsibility for errors or omissions, or for damages resulting from the use of information contained in this document or from the use of programs and source code that may accompany it. In no event shall the publisher and the author be liable for any loss of profit or any other commercial damage caused or alleged to have been caused directly or indirectly by this document.

Published: 2020

© 2020 Altova GmbH

Table of Contents

1	About Altova GDPR Compliance Database	4
2	Standard Installation	6
2.1	Software Requirements.....	7
2.2	Install and License MobileTogether Designer.....	8
2.3	Install ALS, MTS, SVS.....	9
2.3.1	On Windows.....	9
2.3.2	On Linux.....	11
2.3.3	On macOS.....	12
2.4	Start ALS, MTS.....	13
2.4.1	Start Altova LicenseServer.....	13
2.4.2	Start MobileTogether Server.....	14
2.5	Register MTS, SVS with ALS.....	17
2.5.1	Register MobileTogether Server.....	17
2.5.2	Register StyleVision Server.....	18
2.6	License MTS, SVS from ALS.....	19
2.7	Deploy GDPR Compliance Database.....	24
2.8	Start GDPR Compliance Database.....	27
2.9	Important Information.....	28
	Index	31

1 About Altova GDPR Compliance Database

The **General Data Protection Regulation (GDPR)** is a regulation in EU law that protects the data and privacy of persons living in the EU and European Economic Area (EEA). It became binding beginning 25 May 2018. Businesses that process personal data of people living in the EU and EEA must now ensure that this data is handled in line with the principles of the GDPR and that this data is protected. Data protection measures are required to be built into the design of business processes that collect personal data. If a data breach occurs and the breach compromises the privacy of a person, then the breach must be reported to the supervisory authority. (For more information about the GDPR, see [the EU web page on GDPR](#) and [Wikipedia](#)).

In order to make sure that all the personal data of EU/EEA residents held by your organization is in compliance with GDPR, you should build and continuously track all repositories of personal data that you maintain. The **Altova GDPR Compliance Database** enables you to quickly organize information about your repositories of personal data in a structured way.

The **Altova GDPR Compliance Database** enables you to do the following:

- Quickly configure departments and people in your organization that are involved in the collection and processing of personal data
- Quickly configure details of external entities that process personal data your organization collects
- Quickly create a list of all repositories in your organization where personal data is stored
- Set up criteria for classifying data (such as sensitivity, source, protection level), and assign a set of appropriate values for each classification. For example, a data classification might be named `Storage duration` and be defined to have one of the following values: `1 year`, `2 years`, `3 years`, `5 years`, `7 years`
- Define data categories. In a given data category, the data classifications you have created are each assigned a value (from among their respective allowed values). For example, if you define a data category named `Billing Address`, then this category could have the following classification values: (i) `Type of data = personal data`; (ii) `Encryption = none`; (iii) `Storage duration = 7 years`
- List and define all the data-processing activities that are used by your organization, including applications used by external agents that are tasked with processing data for your organization (for example, an external organization that sends promotional emails to your customers)
- Automatically link information that is entered in one part of the compliance database so that this information is reused in related parts of the database; this provides efficiency and accuracy while entering information in the database, as well as a better overview of information
- Enable distributed use of a central system (the compliance database) by multiple users
- Enable users of the compliance database to independently modify the structure of the system, subject to an approval process that is built into the system
- Track changes to the structure and other aspects of the system
- Quickly generate different kinds of reports, which will be based on the information currently held in the compliance database
- Start discussions about different items of the compliance database, and invite specific users to join the discussion; discussion threads can be read directly in the system and in the context of the discussed item
- An internal correspondence system between users of the system, in which metadata items are directly linked to discussion threads about the respective item
- Discussion participants are notified by email about new messages in the discussion

Demo video

To see a demo video that explains how the Altova GDPR Compliance Database works, go to [this URL](#) at the [Altova website](#).

This documentation

This documentation provides a detailed description of how to install each of the individual software components of the GDPR Compliance Database system.

2 Standard Installation

The standard installation is a procedure to install all the software components of Altova GDPR Compliance Database and to set up the system for use. The description of this procedure is organized into the following subsections of this section:

- [Software Requirements](#)⁷: lists the required software components, together with a brief explanation of that component's functionality within the overall GDPR system
- [MobileTogether Designer](#)⁸: how to install and license it
- Altova LicenseServer, MobileTogether Server, and StyleVision Server: [how to install](#)⁹
- Altova LicenseServer and MobileTogether Server: [how to start](#)¹³
- MobileTogether Server, and StyleVision Server: [how to register with Altova LicenseServer](#)¹⁷
- MobileTogether Server, and StyleVision Server: [how to license from Altova LicenseServer](#)¹⁷
- GDPR Compliance Database: [deploy](#)²⁴ by opening the source .mtd file in MobileTogether Designer and deploying the compliance database to MobileTogether Server
- GDPR Compliance Database: [how to start](#)²⁷
- [Important Information](#)²⁸: Lists in one place information such as server IP addresses and ports, default passwords, commands, and URLs that are related to the running of the system

After you have completed the standard installation, users of the compliance database, their access credentials, and other system settings can be configured conveniently in the system's User Management app. The compliance database can then be accessed by the configured users and start to be used.

2.1 Software Requirements

The Altova GDPR Compliance Database is supplied as a complete and fully functional MobileTogether solution. It must be deployed on a MobileTogether Server, from where it can be used by multiple distributed users of the system. To run the Altova GDPR Compliance Database in your organizational environment, the following applications/components are required:

- [Altova MobileTogether Designer](#): Needed to [deploy the Compliance Database](#)²⁴ to an Altova MobileTogether Server on your organization's intranet. MobileTogether Designer is free of charge and can be downloaded from the [Altova website](#). For information about working with MobileTogether Designer, see its [user manual](#).
- [Altova MobileTogether Server](#): The Compliance Database is deployed via MobileTogether Designer to the MobileTogether Server. Authorized users can then access the Compliance Database via web-browser interfaces. Altova MobileTogether Server can be downloaded from the [Altova website](#). It requires a license, which can be bought at the [Altova online shop](#). For information about how MobileTogether Server works, see its [user manual](#). Note that Altova MobileTogether Server can be installed on Windows, Linux, and macOS.
- [Altova StyleVision Server](#): The Compliance Database uses the document-generation functionality of StyleVision Server to generate reports in PDF and Microsoft Word formats. StyleVision Server uses [Apache FOP](#), the FO processor of the Apache Project, to generate PDF files. FOP is automatically installed with StyleVision Server; but note that FOP requires **Java Runtime Environment 1.6 or later** to be installed on the StyleVision Server machine. Altova StyleVision Server can be downloaded from the [Altova website](#); it requires a license, which can be bought at the [Altova online shop](#). For information about working with StyleVision Server, see its [user manual](#). Note that Altova StyleVision Server can be installed on Windows, Linux, and macOS.
- [Altova LicenseServer](#): Needed to license MobileTogether Server and StyleVision Server. LicenseServer is free of charge and can be downloaded from the [Altova website](#). For information about working with LicenseServer, see its [user manual](#). Note that Altova LicenseServer can be installed on Windows, Linux, and macOS.

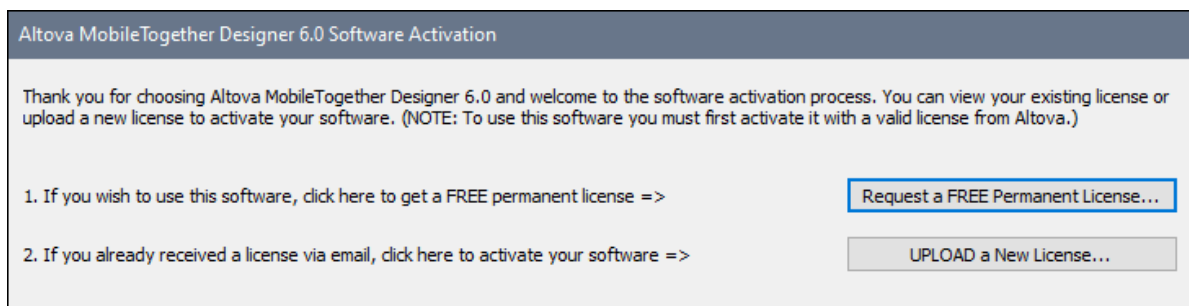
Note: StyleVision Server must be installed on the same machine as MobileTogether Server.

2.2 Install and License MobileTogether Designer

Altova MobileTogether Designer is a Windows application that is needed in order to deploy Altova GDPR Compliance Database to Altova MobileTogether Server. A permanent license key for MobileTogether Designer is available free of charge.

To install MobileTogether Designer and license it, do the following:

1. Go to the [MobileTogether Designer download page](https://www.altova.com/mobiletogether/download) (<https://www.altova.com/mobiletogether/download>) to download and install the software.
2. Start MobileTogether Designer and click the menu command **Help | Software Activation**. The Software Activation dialog appears (*see screenshot below*).



3. Click **Request a Free Permanent Key**.
4. In the dialog that appears now, enter the requested information and click **Request Now**.
5. A permanent MobileTogether Designer license will be sent to the email address you entered. Save the license to a file location.
6. To license MobileTogether Designer, you can either (i) double-click the license file, or (ii) in the Software Activation dialog (*screenshot above*), click **Enter a New Key Code** and, in the New Key-code dialog that appears, copy the license details from the license email you received.

2.3 Install ALS, MTS, SVS

MobileTogether Server and StyleVision Server must be licensed via Altova LicenseServer. Therefore all three servers must be installed on your network. MobileTogether Server and StyleVision Server must be installed on the same machine, but Altova LicenseServer may be installed on a different machine on your network.

This section describes the installation of Altova LicenseServer, MobileTogether Server, and StyleVision Server on [Windows](#)⁹, [Linux](#)¹¹, and [macOS](#)¹² systems.

After the servers have been installed (described in the subsections of this section), you will need to do the following:

1. [Register MobileTogether Server and StyleVision Server with License Server](#)¹⁷
2. [License MobileTogether Server and StyleVision Server from License Server](#)¹⁹

2.3.1 On Windows

When you install MobileTogether Server (MTS) or StyleVision Server (SVS), the installer will inform you that you can choose to also install the corresponding Altova LicenseServer version on the same machine (see *screenshot below, which shows a screen of the MTS installer wizard*). Additionally, you can choose whether you want to *register* the server product (MTS or SVS) during the installation process, and, if yes, then with which License Server (LS) on your network (see *screenshot below*).

Altova MobileTogether Server 6.0 - Installer Wizard

ALTOVA®

This product requires registration with Altova LicenseServer

This installer contains Altova LicenseServer 3.3.

Install Altova LicenseServer on this machine

Register this product with:

LicenseServer installed on this machine

LicenseServer on:

Enter address or select a LicenseServer

Register later

< Back Next > Cancel

You have two broad installation options:

- *Joint installation:* You can install either MTS or SVS first. During this installation you can install LS on the same machine, and register the server product with LS. If you want LS on the same machine as MTS and SVS, then this is the easiest installation option. After installing the first server product together with LS and registering it during the installation process, install the second server product and register it with LS during the installation process. As a result, after the two installations, all three servers will be installed and the two server products will be registered with License Server. All you will then need to do is [license the two server products from LS](#) ¹⁹.
- *Separate installations:* You can install MTS, SVS and LS separately (on the same machine, or with LS on a different machine). If you want the servers on different machines, then you **must** install them separately; you cannot run a joint installation as described in the previous bullet point. In the case of separate installations, it is best to install License Server first and start it. That way, when you install MTS and SVS, you can register them with the already-installed License Server (*see the registration options in the MobileTogether Server Installer Wizard screenshot above*).

Note: If you are updating your version of MobileTogether Server or StyleVision Server, then make sure that you update your License Server version as well (to the corresponding License Server version or higher).

Download and install Altova LicenseServer

This step is required only if you are installing License Server (LS) on a different machine than the one on which MobileTogether Server (MTS) and StyleVision Server (SVS) are installed. Otherwise, you can skip a separate installation, and instead install LS during the installation of MTS or SVS (*see next section below*).

To download and install License Server, do the following:

1. Go to the [License Server download page \(https://www.altova.com/licenseserver/download\)](https://www.altova.com/licenseserver/download).
2. Download License Server for the appropriate OS (License Server is available for Windows, Linux, and macOS).
3. Install License Server. If you have difficulties or need detailed information, see the [appropriate installation section of the License Server documentation](#).

After installation, start LS as described in [Start Altova LicenseServer](#) ¹³.

Download and install MobileTogether Server and StyleVision Server

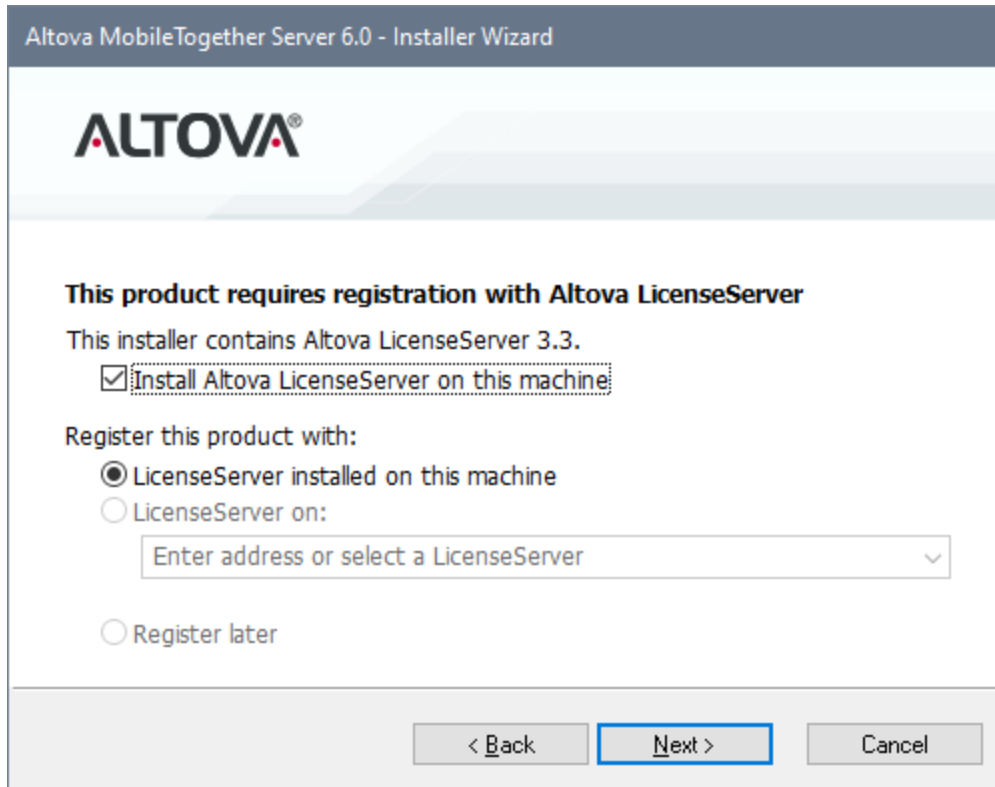
The steps for installing MobileTogether Server (MTS) and StyleVision Server (SVS) are the same. So the instructions for MTS given below apply to SVS also.

The MobileTogether Server (MTS) installer can optionally install Altova LicenseServer (LS) on the same machine as MTS. If you plan to install MTS and LS on the same machine, then it is best that you install both during the MTS installation. If LS is already installed on a machine in your network, then make sure that: (i) the LS version number is the same or higher than that which corresponds to the MTS or SVS version you are installing (whichever is higher), and (ii) that you register MTS with ALS. The ALS version that corresponds to the MTS version you are installing is given in the Installer Wizard screen (*see screenshot below*).

To install MTS (and, optionally, Altova LicenseServer), do the following:

1. Go to the [MobileTogether Server download page \(https://www.altova.com/mobiletogether/download\)](https://www.altova.com/mobiletogether/download).
2. Download the MTS installer for the appropriate OS (MTS is available for Windows, Linux and macOS).
3. Start the MTS installer.

4. In the LS screen (*screenshot below*), select: (i) whether you wish to install License Server as part of the MobileTogether Server installation, or not; and (ii) whether you wish to register MTS with a LS or not, and, if yes, then with which LS. The section [Register MobileTogether Server](#)¹⁷ describes how to register MTS with LS later—that is, subsequent to the installations of both servers..



If you have difficulties or need detailed information, see the [appropriate Installation section of the MobileTogether Server documentation](#).

After installation, start MTS as described in [Start MTS](#)¹⁴. (Note that SVS does not need to be started.)

After you have installed and registered MobileTogether Server and StyleVision Server, you are ready to license the two products. How to do this is described in the chapter [License MTS and SVS from ALS](#)¹⁹.

2.3.2 On Linux

If you are installing MobileTogether Server (MTS), StyleVision Server (SVS), and Altova LicenseServer (ALS or LS) on **Linux**, you must install each separately. The installation and setup steps are as follows:

1. Download the Linux packages of MTS, SVS, and ALS from the [Altova Download Center](https://www.altova.com/download) (<https://www.altova.com/download>).
2. Install the MTS, SVS, and ALS packages. For information about how to do this, see the installation sections in their respective online user manuals: [MobileTogether Server](#), [StyleVision Server](#), [Altova LicenseServer](#).

3. Start [Altova LicenseServer](#)¹³ and [MobileTogether Server](#)¹⁴. (Note that SVS does not need to be started.)
4. [Register MobileTogether Server and StyleVision Server](#)¹⁷ with License Server.
5. [Assign a license](#)¹⁹ to MobileTogether Server and StyleVision Server from License Server.

2.3.3 On macOS

If you are installing MobileTogether Server (MTS), StyleVision Server (SVS), and Altova LicenseServer (ALS or LS) on **macOS**, you must install each separately. The installation and setup steps are as follows:

1. Download the Linux packages of MTS, SVS, and ALS from the [Altova Download Center](https://www.altova.com/download) (<https://www.altova.com/download>).
2. Install the MTS, SVS, and ALS packages. For information about how to do this, see the installation sections in their respective online user manuals: [MobileTogether Server](#), [StyleVision Server](#), [Altova LicenseServer](#).
3. Start [Altova LicenseServer](#)¹³ and [MobileTogether Server](#)¹⁴. (Note that SVS does not need to be started.)
4. [Register MobileTogether Server and StyleVision Server](#)¹⁷ with License Server.
5. [Assign a license](#)¹⁹ to MobileTogether Server and StyleVision Server from License Server.

2.4 Start ALS, MTS

After you have installed Altova LicenseServer, MobileTogether Server, and StyleVision Server, you must start Altova LicenseServer and MobileTogether Server as services.

The subsections of this section describe how to:

- [Start Altova LicenseServer as a service](#)¹³
- [Start MobileTogether Server as a service](#)¹⁴

Note: StyleVision Server is not started as a service. It is called silently from MobileTogether Server with commands that request specific StyleVision Server functionality.

2.4.1 Start Altova LicenseServer

In order to use MobileTogether Server (MTS), it must be licensed with an Altova LicenseServer (ALS or LS) on your network. LicenseServer must be running continuously as a service in order for MTS to run. Stopping License Server will also stop MobileTogether Server. If this happens, you will need to first restart License Server (how to do this is described in this chapter) and then restart the stopped MobileTogether Server (see [next topic](#)¹⁴).

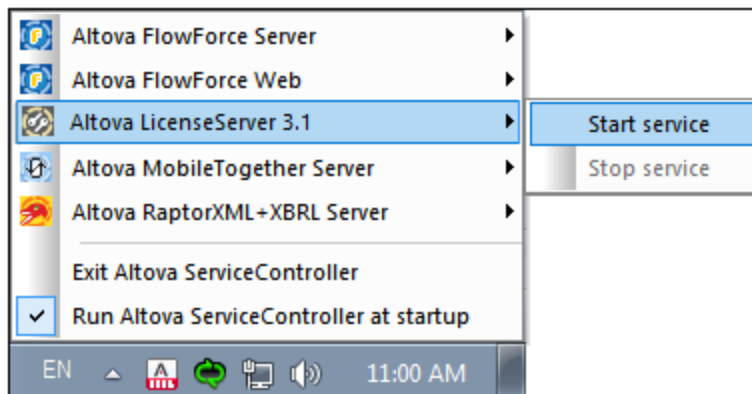
Starting and stopping Altova LicenseServer

Start and stop LicenseServer as follows:

▼ On Windows

You can start LicenseServer via the Altova ServiceController, which is available in the system tray.

First, click **Start | All Programs | Altova LicenseServer | Altova ServiceController** to start Altova ServiceController and display its icon in the system tray (see *screenshot below*). If you select the *Run Altova ServiceController at Startup* option, Altova ServiceController will start up on system start and its icon will be available in the system tray from then onwards.



To start LicenseServer, click the Altova ServiceController icon in the system tray, hover over **Altova LicenseServer** in the menu that pops up (see *screenshot above*), and then select **Start Service** from the LicenseServer submenu. If LicenseServer is already running, the *Start Service* option will be disabled.

To stop LicenseServer, select **Stop Service** from the LicenseServer submenu (see *screenshot above*).

▼ On Linux

To correctly register and license MobileTogether Server with LicenseServer, LicenseServer must be running as a daemon on the network. Start LicenseServer as a daemon with the following command:

[< Debian 8]	<code>sudo /etc/init.d/licenseserver start</code>
[≥ Debian 8]	<code>sudo systemctl start licenseserver</code>
[< CentOS 7]	<code>sudo initctl start licenseserver</code>
[≥ CentOS 7]	<code>sudo systemctl start licenseserver</code>
[< Ubuntu 15]	<code>sudo initctl start licenseserver</code>
[≥ Ubuntu 15]	<code>sudo systemctl start licenseserver</code>
[RedHat]	<code>sudo initctl start licenseserver</code>

If at any time you need to stop LicenseServer, replace `start` with `stop` in the above commands. For example:

```
sudo /etc/init.d/licenseserver stop
```

▼ On macOS

To correctly register and license MobileTogether Server with LicenseServer, LicenseServer must be running as a daemon. Start LicenseServer as a daemon with the following command:

```
sudo launchctl load /Library/LaunchDaemons/com.altova.LicenseServer.plist
```

If at any time you need to stop LicenseServer, replace `load` with `unload` in the above command:

```
sudo launchctl unload /Library/LaunchDaemons/com.altova.LicenseServer.plist
```

2.4.2 Start MobileTogether Server

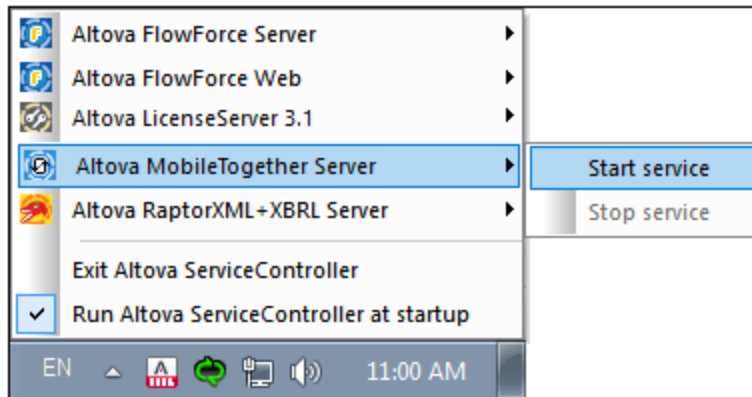
In order to run MobileTogether Server, it must be started as a service. How to do this described below.

▼ On Windows

You can start MobileTogether Server via the Altova ServiceController, which is available in the system tray.

First, click **Start | All Programs | Altova LicenseServer | Altova ServiceController** to start Altova ServiceController and display its icon in the system tray (see *screenshot below*). If you select the *Run*

Altova ServiceController at Startup option, Altova ServiceController will start up on system start and its icon will be available in the system tray from then onwards.



To start MobileTogether Server, click the Altova ServiceController icon in the system tray, hover over **MobileTogether Server** in the menu that appears (see *screenshot above*), and then select **Start Service** from the MobileTogether Server submenu. If **MobileTogether Server** is already running, the *Start Service* option will be disabled.

To stop MobileTogether Server, select **Stop Service** from the MobileTogether Server submenu (see *screenshot above*).

▼ On Linux

Start MobileTogether Server as a daemon with the following command:

[< Debian 8]	<code>sudo /etc/init.d/mobiletogetherserver start</code>
[≥ Debian 8]	<code>sudo systemctl start mobiletogetherserver</code>
[< CentOS 7]	<code>sudo initctl start mobiletogetherserver</code>
[≥ CentOS 7]	<code>sudo systemctl start mobiletogetherserver</code>
[< Ubuntu 15]	<code>sudo initctl start mobiletogetherserver</code>
[≥ Ubuntu 15]	<code>sudo systemctl start mobiletogetherserver</code>
[RedHat]	<code>sudo initctl start mobiletogetherserver</code>

To set up and configure MobileTogether Server, open its Web UI (Setup) page by entering the URL of the Web UI page in the address bar of an Internet browser: `http://<serverIPAddressOrName>:8085`.

Firewall Note

Make sure that the port address is not blocked by your firewall.

▼ On macOS

MobileTogether Server server daemon starts automatically after installation and a re-boot of the machine. You can start MobileTogether Server as a daemon with the following command:

```
sudo launchctl load /Library/LaunchDaemons/com.altova.MobileTogetherServer7.0.plist
```

If at any time you need to stop MobileTogether Server, use:

```
sudo launchctl
unload /Library/LaunchDaemons/com.altova.MobileTogetherServer7.0.plist
```

To set up and configure MobileTogether Server, open its Web UI (Setup) page in one of the following ways:

- Double-click the MobileTogether Server 7.0 icon in the Applications folder of the Finder
- Enter the URL of the Web UI page in the address bar of an Internet browser:
`http://<serverIPAddressOrName>:8085`

Firewall Note

Make sure that the port address is not blocked by your firewall.

2.5 Register MTS, SVS with ALS

After you have installed Altova LicenseServer, MobileTogether Server, and StyleVision Server, and started Altova LicenseServer and MobileTogether Server as services, you need to register MobileTogether Server and StyleVision Server with License Server preparatory to licensing them with License Server.

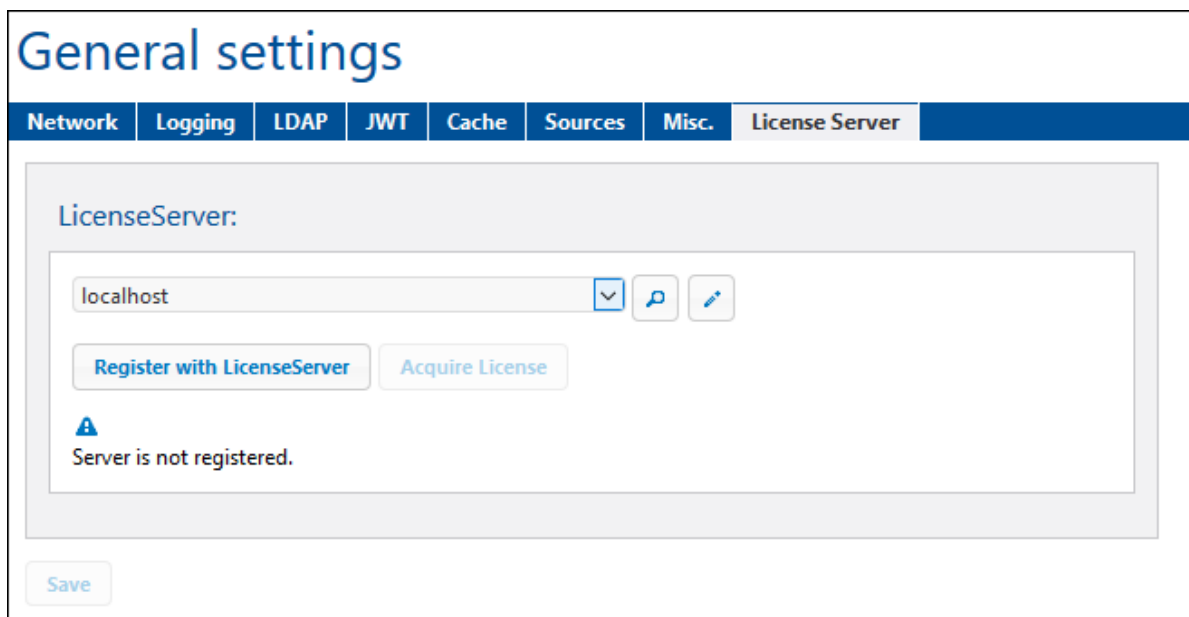
The subsections of this section describe how to:

- [Register MobileTogether Server](#)¹⁷
- [Register StyleVision Server](#)¹⁸

2.5.1 Register MobileTogether Server

MobileTogether Server must be registered with Altova LicenseServer before MobileTogether Server can be licensed. If, during the installation process of MobileTogether Server, you have not registered MobileTogether Server with Altova LicenseServer, then you can do this subsequently via the administrator interface of MobileTogether Server, as follows:

1. Open the MobileTogether Server administrator interface by entering in a web browser the IP address of the machine on which MobileTogether Server is installed, followed by the port number 8085. For example: `http://<mts-ipaddress>:8085`.
2. Enter the username `root` and this user's default password `root`.
3. Go to the *Settings* tab and then to the *LicenseServer* pane (see screenshot below).



4. In the *Host* combo box, select the machine on which License Server is installed; alternatively, enter the machine's IP address. The two buttons to the right of the combo box enable you, respectively, to search for machines on the network that host Altova LicenseServer, and to enter a host machine's IP address manually.

5. Click **Register with LicenseServer** to register MobileTogether Server with the selected License Server.

Register MobileTogether Server from the command line

You can also register MobileTogether Server from the command line interface, by using MobileTogether Server's `licenseserver` command. (The commands below assume that Altova LicenseServer is installed on a machine named `localhost`.)

On Windows

```
<ProgramFilesFolder>\Altova\MobileTogetherServer7.0\bin\mobiletogetherserver  
licenseserver localhost
```

On Linux

```
sudo /opt/Altova/MobileTogetherServer7.0/bin/mobiletogetherserver licenseserver  
localhost
```

On macOS

```
sudo /usr/local/Altova/MobileTogetherServer7.0/bin/mobiletogetherserver licenseserver  
localhost
```

2.5.2 Register StyleVision Server

StyleVision Server must be registered with Altova LicenseServer before StyleVision Server can be licensed. If, during the installation process of StyleVision Server, you have not registered StyleVision Server with Altova LicenseServer, then you can do this subsequently by using StyleVision Server's `licenseserver` command. (The commands below assume that Altova LicenseServer is installed on a machine named `localhost`.)

On Windows

```
<ProgramFilesFolder>\Altova\StyleVisionServer2020\bin\stylevisionserver licenseserver  
localhost
```

On Linux

```
sudo /opt/Altova/StyleVisionServer2020/bin/stylevisionserver licenseserver localhost
```

On macOS

```
sudo /usr/local/Altova/StyleVisionServer2020/bin/stylevisionserver licenseserver  
localhost
```

2.6 License MTS, SVS from ALS

The GDPR Compliance Database is deployed to and runs on MobileTogether Server. In order to use the compliance database from MobileTogether Server, you need to license MobileTogether Server. This section describes how to obtain a MobileTogether Server license and assign it to your installed MobileTogether Server from Altova LicenseServer.

Note: This section describes the licensing procedure for MobileTogether Server in detail. The licensing procedure for StyleVision Server is exactly analogous.

Licenses for MobileTogether Server and StyleVision Server

You can obtain either:

- a free 30-day evaluation license, respectively, for MobileTogether Server and StyleVision Server (via Altova LicenseServer; *procedure described below*), or
- a paid MobileTogether Server license via the [Altova Online Shop](#) (in case of questions, contact sales@altova.com)

After obtaining the two licenses, they must be uploaded to the license pool of Altova LicenseServer and assigned from the License Server's administrator interface to the respective products.

Get, upload, and assign a license

This section describes how to:

- Get a free 30-day evaluation license via Altova LicenseServer,
- Upload the received license to the license pool of Altova LicenseServer, and
- Assign the license to the Altova product.

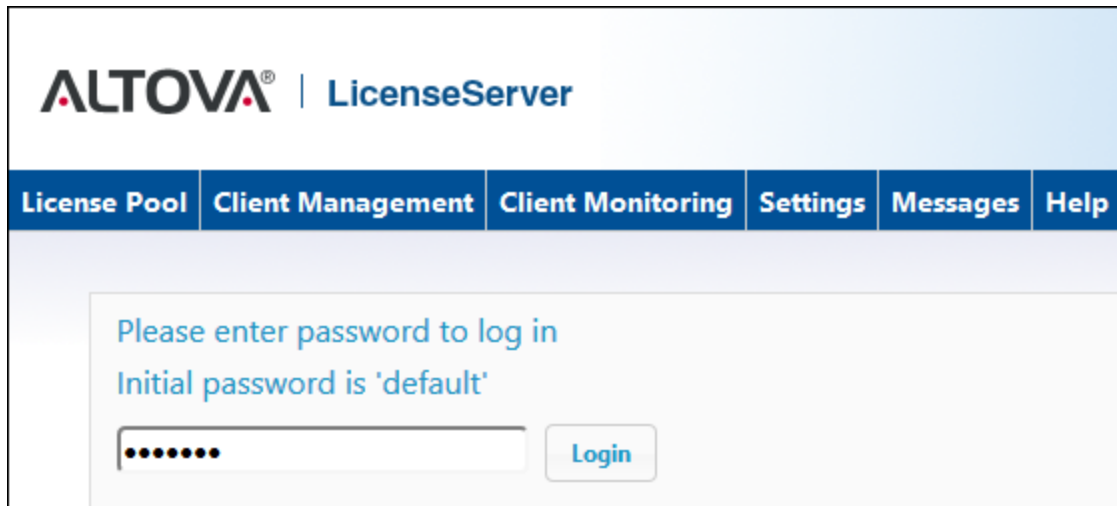
The uploading and assigning of a paid license is done in the same way as for the evaluation license described below.

Note: The procedure given below describes the licensing of MobileTogether Server. The same procedure applies also to the licensing of StyleVision Server.

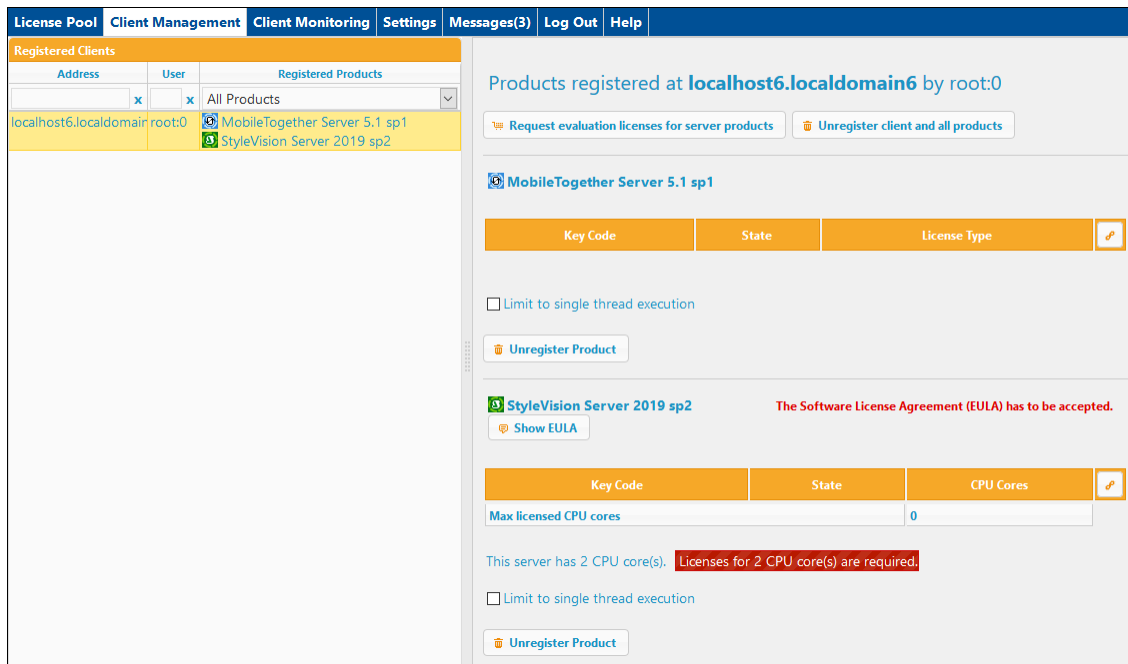
Get a free evaluation license

After you have [started the servers](#) ¹³, get an evaluation license and assign it as follows:

1. In a web browser window, open the web interface of Altova LicenseServer by entering the IP address of the machine on which License Server is installed, followed by the port number 8088. So: `http://<mts-ipaddress>:8088`. The License Server login page is displayed (*screenshot below*).



2. Enter the initial password `default` to log in. (You can change the password later in the *Settings* tab.)
3. Go to the Client Management tab (*screenshot below*). You will see that MobileTogether Server and StyleVision Server are registered with License Server, but that they are not licensed.



4. In the right-hand pane click **Request evaluation licenses for server products** (see *screenshot above*). The Request Evaluation Licenses dialog (*screenshot below*) appears.

Request Evaluation Licenses

To request a free 30-day software evaluation key code, please enter the required information below. The licensing manager will automatically contact the Altova licensing server, which will fulfill your request and send the key code to you via email.

IMPORTANT: To receive an evaluation key code all fields must be filled in. Please ensure that your email address is entered accurately so that the key code can be delivered to you.

For GDPR compliance purposes, I am a resident/citizen of an EU member country.

Altova MobileTogether Server 5.1 sp1

Altova StyleVision Server 2019

Name: GDPR Tester

Company: Altova GmbH

Email: gdpr.testner@altova.com

[Request Evaluation Licenses](#)

5. Enter the requested information and click **Request Evaluation Licenses**.
6. The requested evaluation licenses will be sent to the email address you entered. Save the licenses to a file location.

Upload licenses to the license pool of License Server

After saving the licenses to an accessible location on your network, upload the licenses to the license pool of License Server as follows:

1. In the License Server interface, go to the License Pool tab (see first two screenshots of this section, above).
2. At the bottom of the License Pool tab, click the **Browse** button of the *Upload License File* field.

Upload License File

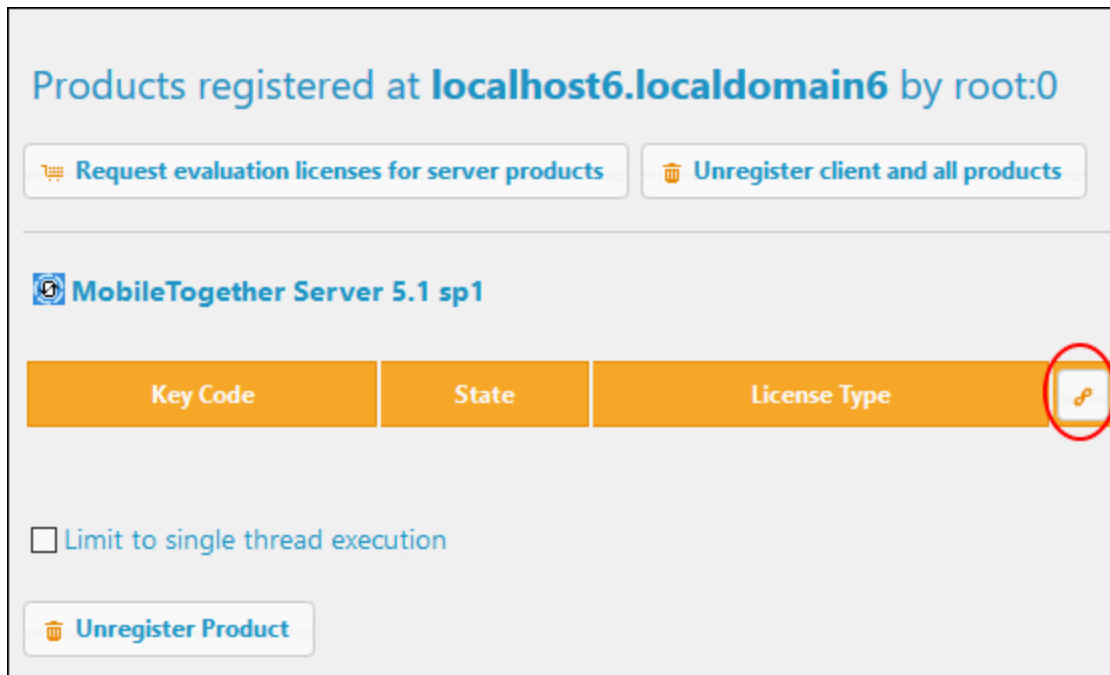
3. Browse and select the license files that you received by email, and click **Upload**. The licenses will now be available in the License Pool.

Assign a license

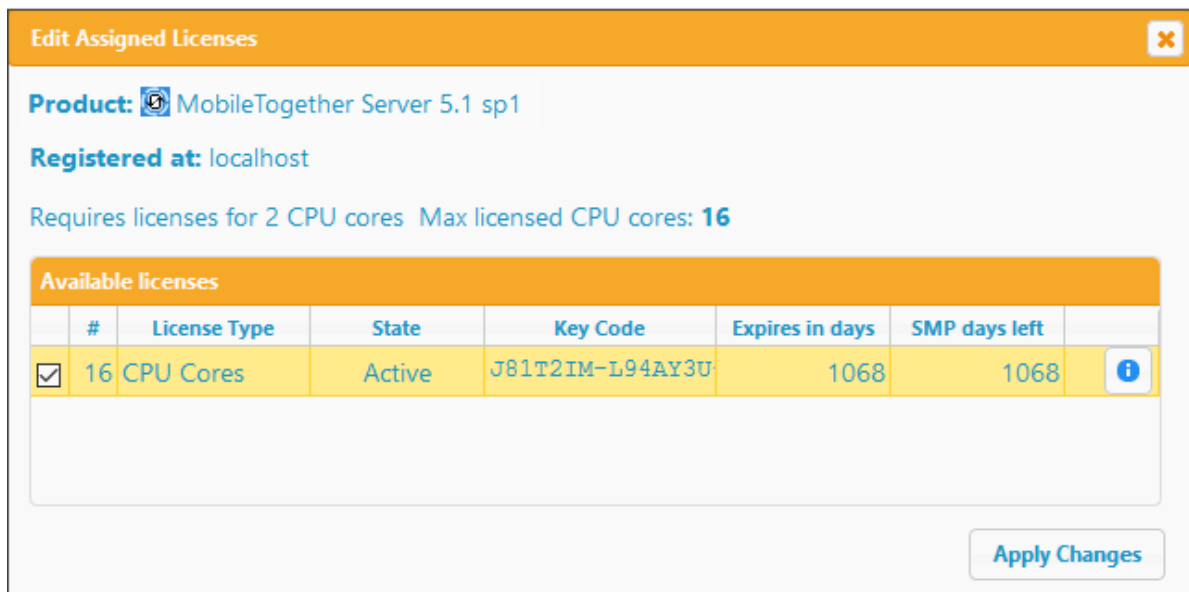
Assign licenses from the license pool as described below for MobileTogether Server:

1. Go to the Client Management tab. Click the client in the left pane to display the MobileTogether Server that is registered for this client.
2. If MobileTogether Server is installed on a Linux or macOS machine and you have not yet accepted the MobileTogether Server license, then the MobileTogether Server entry in the right-hand pane will contain

- a button for accepting the license. Accept the license now.
- In the right-hand pane, click **Edit Assigned Licenses** (marked in red in the screenshot below).



- In the Edit Assigned Licenses dialog that appears (screenshot below), the MobileTogether Server license (that was uploaded to the license pool) will be displayed. Select it and click **Apply Changes**.



The license will be assigned.

Note: For detailed information about using and configuring License Server, click **Help** in the License Server interface.

Assigning a StyleVision Server license

The licensing procedure for StyleVision Server is exactly analogous to the licensing procedure for MobileTogether Server described above.

2.7 Deploy GDPR Compliance Database

The Altova GDPR Compliance Database and its User Management app, together with associated files, are delivered as a zipped archive that is downloadable from the Altova website. The zipped archive contains:

- **GDPR.mtp**, which is a MobileTogether package containing the compliance database solution and its data files
- **GDPR Users.mtp**, which is a MobileTogether package containing the GDPR user management app and its data files
- Additional files and folders; these will not be *deployed* to the server but must, instead, be *copied* to the server.

Deployment steps

Deployment consists of the following steps:

1. Unzip the zipped archive to a suitable location on your network
2. Deploy the MobileTogether packages **GDPR.mtp** and **GDPR Users.mtp** to MobileTogether Server
3. Copy all the other files and folders in the unzipped archive to MobileTogether Server

Deploy the GDPR MobileTogether packages (.mtp files)

To deploy the compliance database and its user management app to MobileTogether Server do the following:

1. Start the MobileTogether Server administrator interface via the URL: `http://<mts-ipaddress>:8085`, and log in (see [Important Information](#)²⁸ for credentials).
2. In the **Workflows** tab of MobileTogether Server, click **Create Container** and create a container named, say, **dataInformation** directly under the root. This is the container on the server where you will deploy the solution. Alternatively, you can deploy to any other container you like. If you wish to deploy the solution to the already existing **public** container, then you do not need to create a new container. (For more information about how to do this, see the [MobileTogether Server user manual](#).)
3. In MobileTogether Designer, open the package file **GDPR.mtp**.
4. You will be asked whether you want to deploy the file. Click **Yes**. (If you need to, you can always deploy via the menu command **File | Deploy to MobileTogether Server**.)
5. In the dialog that appears (*screenshot below*), enter the IP address or network name of the machine hosting MobileTogether Server, the port number **8085** (which is the port number for administrator access to MobileTogether Server), and your login details.

Save Design

Enter the host name and port of a MobileTogether server to deploy the current design.

Server: localhost Port: 8085

User: root Use SSL

Password: ●●●●

Login: Directly

Global resources

Active configuration: Default

Deploy As

Path: /dataInformation/GDPR Browse

The path must start with a slash character.

Description:

Save design changes on deploying

Reset persistent client data on next workflow run

OK Cancel

6. In the *Path* field (see screenshot above), select a suitable folder on the server to which to deploy. You can browse for the folder (aka container) that you want. Note that you can create new containers on the server (see point 2 above).
7. Click **OK** to deploy.
8. In MobileTogether Designer, open the the package file `GDPR Users.mtp`, and deploy it to the **same folder/container** on MobileTogether Server as that to which `GDPR.mtp` was deployed.

The compliance database and its user management app have now been deployed to MobileTogether Server. All you need to do to complete the deployment is to copy additional resources to the server (described below).

Copy the SampleData and Reports folders to the server

To complete the deployment of the system you need to copy all the other files and folders from the unzipped archive—other than the two package files—to the *Server-side solution's working directory* of MobileTogether Server. Do this as follows:

1. In MobileTogether Server, go to the **Settings | Sources** tab (see [MobileTogether Server user manual](#)) and note the currently selected solution's working directory.
2. Copy all the files and folders in the top-level directory of the unzipped archive, except the two package files, to the server-side solution's working directory (refer also to [Important Information](#))²⁸.

Note: You can define any folder on the server to be the *Server-side solution's working directory*, and copy the resources to this location. Note, however, that this location will be the working directory of all MobileTogether workflows that are deployed on this server.

This completes the deployment of the Compliance Database and its User Management app. You can now start the compliance database or its user management app.

Your first step would be to define the users and other settings of the Compliance Database. How to do this is described in the User Guide.

2.8 Start GDPR Compliance Database

After the GDPR Compliance Database has been deployed to MobileTogether Server, it is used as follows:

- Start its user management app to set up users of the system and certain system settings.
- Users that have been defined in the user management app can start and access the compliance database.

Both the compliance database and its user management app are started by entering their respective URLs in a web browser. These are, respectively:

- `http://<ip-address-of-MobileTogetherServer>:8084/run?d=/public/GDPR`
- `http://<ip-address-of-MobileTogetherServer>:8084/run?d=/public/GDPR Users`

Note: As part of the process of configuring the system, configured users will be sent the URL with which to access the compliance database.

Note: The port number `8084` is the default client port of MobileTogether Server, that is, the port that has been configured on MobileTogether Server to be open to client traffic. You can change the client port in the MobileTogether Server administrator interface. See the [online MobileTogether Server manual](#) for more information.

Note: How to work with the **compliance database** and its **user management app** is explained in the User Guide part of the Altova GDPR Compliance Database documentation.

2.9 Important Information

Altova LicenseServer

Required in order to license MobileTogether Server and StyleVision Server

- *Altova LicenseServer web interface:* `http://<LicenseServer-ipaddress>:8088`
- *Altova LicenseServer initial password:* `default`

Note: The initial password can be changed in the [Settings tab](#) of License Server.

MobileTogether Server administrator interface

Provides access to MobileTogether Server settings.

- *URL:* `http://<MobileTogetherServer-ipaddress>:8085`
- *Default user:* `root`
- *Default password:* `root`

Note: To be able to log in to the administrator interface of MobileTogether Server, the username must be one that has administrator rights. A user named `root` is pre-defined and has administrator rights. So you can log in with administrator rights for the first time as `root`. You can change the password of `root` in the Users and Roles tab of the administrator interface. In this tab, you can also create additional users with different privileges.

MobileTogether Server solutions directory location

The server-side solutions directory is the physical folder location on the server to which solutions are deployed (from MobileTogether Designer). This folder is specified in the *Settings* tab of MobileTogether Server (see [Deploy the Solution to MobileTogether Server](#)²⁴). Once this setting has been specified, all deployed files will be saved to this location. After deploying the solution, you must also **manually** save the `sampleData` subfolder from the unzipped folder of `GDPR` files to the server-side solution's working directory. (The `sampleData` subfolder contains the SQLite database in which the GDPR metadata will be stored.) You can set any folder on the server to be the server-side solutions directory. The location of the default MobileTogether Server solutions directory on Windows, Linux, and macOS, respectively, is given below.

On Windows

```
C:\ProgramData\Altova\MobileTogetherServer\SolutionFiles
```

On Linux

```
/var/opt/Altova/MobileTogetherServer/SolutionFiles
```

On macOS

```
/usr/local/Altova//MobileTogetherServer/SolutionFiles
```

Note: The `ProgramData` folder is by default a hidden folder on Windows systems. So you will need to change the option of Windows Explorer that hides folders.

MobileTogether Server client interface

`http://<MobileTogetherServer-ipaddress>:8084`

Note: The port number `8084` is the default client port of MobileTogether Server. You can change the client port in the MobileTogether Server administrator interface. See the [online MobileTogether Server manual](#) for more information.

GDPR Compliance Database

The URLs of the GDPR Compliance Database and its user management app are, respectively:

- `http://<MobileTogetherServer-ipaddress>:8084/run?d=/public/GDPR`
- `http://<MobileTogetherServer-ipaddress>:8084/run?d=/public/GDPR Users`

Note: The container names `public/GDPR` and `public/GDPR Users` are assumed to be the containers [where the GDPR Compliance Database and its user management app have been deployed](#)²⁴.

Online user manuals of Altova products

These are available at the [Altova website](#):

- Altova LicenseServer: <https://www.altova.com/documentation#licenseserver>
- MobileTogether: <https://www.altova.com/documentation#mobiletogether>
- StyleVision Server: <https://www.altova.com/documentation#stylevisionserver>

Index

A

Altova GDPR Compliance Database,
features, 4

Altova LicenseServer,
see License Server, 28

Altova LicenseServer (in standard installation),
installation on Linux, 11
installation on macOS, 12
installation on Windows, 9
starting as service, 13

C

Command line registration of MobileTogether Server, 17

D

Deploying Compliance Database to server, 24

F

Features of the GDPR Compliance Database, 4

G

GDPR Compliance Database,
starting (in standard installations), 27
URL of (in standard installations), 27

GDPR Compliance Database (in standard installations),
URL of, 28

GDPR Compliance Database features, 4

GDPR file locations on server, 24

GDPR Users.mtp, 24

GDPR.mtp, 24

I

Installation steps (standard installation),

Altova LicenseServer, 9

Altova LicenseServer on Linux, 11

Altova LicenseServer on macOS, 12

Altova LicenseServer on Windows, 9

MobileTogether Designer, 8

MobileTogether Server, 9

MobileTogether Server on Linux, 11

MobileTogether Server on macOS, 12

MobileTogether Server on Windows, 9

of all software components individually, 6

registering MobileTogether Server with Altova LicenseServer, 17

registering MobileTogether Server with License Server, 17

registering StyleVision Server with Altova LicenseServer, 18

registering StyleVision Server with License Server, 17

starting Altova LicenseServer as service, 13

starting MobileTogether Server as service, 13, 14

StyleVision Server, 9

StyleVision Server on Linux, 11

StyleVision Server on macOS, 12

StyleVision Server on Windows, 9

L

License Server (in standard installations),

URL of web interface, 28

License Server user manual, 28

LicenseServer (in standard installation), 7

Licensing MobileTogether Server with Altova LicenseServer,

in standard installation, 19

Licensing StyleVision Server with Altova LicenseServer,

in standard installation, 19

M

MobileTogether Designer,

deploying compliance database, 24

MobileTogether Designer (in standard installation), 7

MobileTogether Designer installation (in standard installation), 8

MobileTogether Designer user manual, 28

MobileTogether Server,

deploying compliance database to, 24

MobileTogether Server (in standard installation), 7

command line registration with Altova LicenseServer, 17

installation on Linux, 11

installation on macOS, 12

installation on Windows, 9

licensing with Altova LicenseServer, 19

registering with Altova LicenseServer, 17

starting as service, 14

MobileTogether Server (in standard installations),

default user and password, 28

URL of administrator interface, 28

URL of client interface, 28

MobileTogether Server user manual, 28

MTP files, 24

installation on macOS, 12

installation on Windows, 9

licensing with Altova LicenseServer, 19

registration with Altova LicenseServer, 18

StyleVision Server user manual, 28

U

User manuals,

of Altova LicenseServer, 28

of MobileTogether Designer, 28

of MobileTogether Server, 28

of StyleVision Server, 28

P

Package files, 24

R

Registering MobileTogether Server with Altova LicenseServer,

in standard installation, 17

Registering StyleVision Server with Altova LicenseServer,

in standard installation, 18

Reports folder, 24

S

SampleData folder, 24

Server locations of GDPR files, 24

Server-side working directory, 24

Software requirements (in standard installation), 7

Standard installation, 6

StyleVision Server (in standard installation), 7

installation on Linux, 11